

Nature on the Space Coast

With nearly half of the county in public ownership, Florida's Space Coast residents have shown a true commitment to preserving their very best natural assets. A major bird migration corridor, this dynamic area features four national wildlife refuges, a national seashore, the nation's most diverse estuary, and Florida's longest fresh water river with associated lakes and marshes. Visit some of earth's oldest living reptiles warming in the sun. See a manatee. Kayak the quiet backwaters. Go birding. Hike our scenic trails. The Space Coast offers endless possibilities to enjoy invigorating outdoor activities and unparalleled educational experiences.

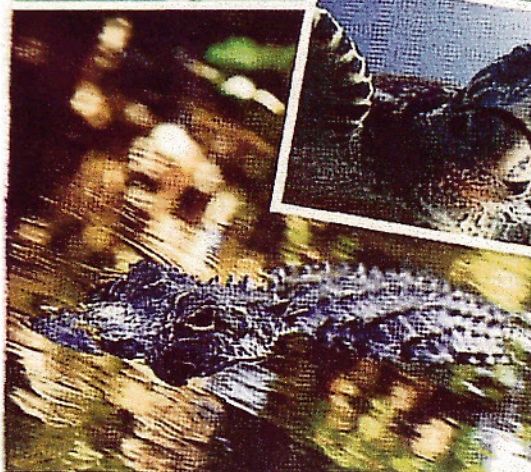


PHOTO BY BOB PATY



PHOTO BY BOB PATY

Close Encounters



SEA TURTLE FACTS

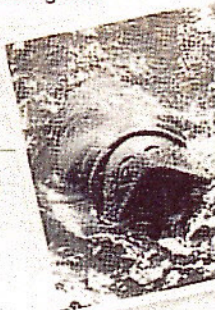
- It can take 15 to 50 years before a sea turtle is capable of reproducing. Scientists estimate that only one in 1,000 hatchlings will survive to adulthood.

- Sea turtles live their entire life in the ocean only coming ashore when the female lays her eggs. They can migrate thousands of miles and usually return to lay their eggs on the same beach where they hatched.

- When it's time to sleep, a loggerhead will wedge under a rock close to the shore, or take a snooze while floating on the surface of deep water.

- Hatchlings weigh less than one ounce and are only 2-inches long.

- Adults can grow over 3-feet long and weigh 200 to 300 pounds!



GATOR FACTS

- How can you tell the length of an alligator? Each inch from its eyes to the tip of its nose equals one foot!

- The largest alligator ever recorded in Florida was 17-feet 5-inches long (5.3 meters).

- Alligators are classified as reptiles along with lizards, snakes, and turtles, but they are actually more closely related to birds, whose direct ancestors were dinosaurs!

- On land, alligators can lumber along dragging their tails, or they can walk on their toes with the heels of the hind feet and most of the tail well off the ground. Using this "high walk," alligators can run up to 30 miles per hour (48 kph) for short distances.

MANATEE FACTS

- The manatee's closest land relatives are the elephant and the hyrax, a small, gopher-sized mammal.

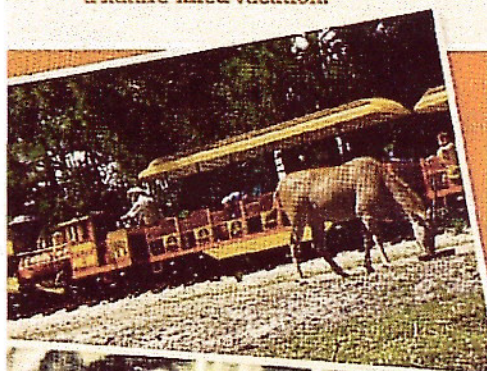
- Manatees eat aquatic plants and can consume 10 to 15 percent of their body weight daily in vegetation.

- Resting manatees have been known to stay submerged for up to 20 minutes. When manatees are using a great deal of energy, they may surface to breathe as often as every 30 seconds.

- Fossil remains of manatee ancestors show they have inhabited Florida for about 45 million years. Modern manatees have been in Florida for over one million years.

Into the WILD

The Space Coast is considered a leader in Florida eco- and nature-based tourism. Located on the Atlantic Flyway, the area is within close proximity to 40 sites on the Great Florida Birding Trail (GFBT) and is a perfect place to watch for migrating species. Options for exploring include guided and un-guided tours by foot, boat, automobile, kayak or bicycle. Visit one of the largest intact eco-systems in Florida offering unparalleled opportunities for a nature-filled vacation.



Archie Carr National Wildlife Refuge

(772) 562-3909 ext. 275 | FWS.gov/archiecarr/

The section of coastline from Melbourne Beach to Wabasso Beach is the most important nesting area for loggerhead sea turtles in the western hemisphere and the second most important nesting beach in the world.

Brevard County Environmentally Endangered Lands Program

(321) 255-4466 | EELBrevard.com

The EEL Program protects Brevard County's unique natural habitats, while managing them for their rare, threatened, endangered or endemic plants and animals. Environmental education and passive recreation opportunities, such as hiking and wildlife observation, are provided on EEL sanctuaries.

Brevard Nature Alliance

(321) 268-5224 | BrevardNatureAlliance.org

A voluntary group of individuals and organizations associated for the purpose of raising awareness of citizens and visitors to the value and importance of the natural resources of Brevard County.

Brevard Museum of History and Natural Science

2201 Michigan Avenue | Cocoa

(321) 632-1830 | BrevardMuseum.org

Where history comes alive!

See description on page 83.

Brevard County Parks & Recreation Department

(321) 632-1874 | BrevardParks.com

Brevard County Parks & Recreation Department manages 110 parks, an aquatic center, a cultural center, three unique campgrounds, three challenging golf courses, eight recreation sanctuaries and 13 school athletic sites.

Brevard Zoo

8225 N. Wickham Road | Melbourne

(Quarter mile east of I-95, exit 191)

(321) 254-WILD | BrevardZoo.org

Never before has a zoo brought you so close to the wild. Only at Brevard Zoo can you take a kayaking adventure around animal exhibits, seeing the inhabitants up-close and personal. Let a giraffe eat right from your palm, pet a rhino, touch a baby gator, or have birds land on your arms. Cool off in the Play Lagoon and take in our 20-gallon aquarium and touch tank. Walk along shaded boardwalks surrounded by lush, unspoiled Florida fauna. Brevard Zoo offers special activities for all ages, year round.

Barrier Island Sanctuary

8385 S. Highway A1A | Melbourne Beach
(321) 723-3556 | BarrierIslandCenter.com

This 34-acre sanctuary features a modern educational facility with an interactive exhibit room, restrooms and a gift shop. Open Tuesday through Sunday 9 a.m. to 5 p.m.

Buck Lake Conservation Area

2725 Blake Lee Trail | Mims
(407) 893-3127 | CFBW.com/bucklake.shtml

Exactly 9,638 acres of woodlands and wetlands with trails where visitors can observe the variety of protected natural communities that support many species of plants and animals. GFBT Site #East-66.

Blue Heron Water Reclamation Facility

(321) 333-5642 | CFBW.com/blueheron.shtml

The facility is open for birding from 7 a.m. to 3 p.m. on weekdays. Appointments may be made to access the wetlands on weekends. It is advisable to call ahead. GFBT Site #East-80.

Canaveral National Seashore

(Six miles east of Titusville on State Road 402)
(321) 267-1110 | NPS.gov/cana

A pristine, undeveloped beach, dunes and lagoon which offers sanctuary to an abundant blend of plants and animals. Year round recreation includes fishing, boating, canoeing, surfing, sunbathing, swimming, hiking, camping, nature and historical trails. Daily use fee is \$3 per person, children under 16 are free. GFBT Site # East-63 & 70.

Coconut Point Sanctuary

4000 S. Highway A1A | Melbourne Beach
(321) 723-3556 | EELBrevard.com/ep_recreation.php

The 62-acre habitat of coastal strand, oak scrub, coastal oak forest and mangrove forest rolls over ancient sand dunes from the Atlantic Ocean to the Indian River Lagoon.

Dicerandra Scrub Sanctuary

Melissa Drive | Titusville
(321) 264-5185 | EELBrevard.com/ep_recreation.php

This 44-acre site is named after an endemic, endangered mint plant with bright purple flowers. A hiking trail leads through scrubby flatwoods and marsh.

Enchanted Forest Sanctuary

(321) 264-5185 | EFS.EELBrevard.com

Walking and learning trails wander through timeless scrub, mesic and hydric ecosystems with a wide variety of endangered and threatened species. Educational facility. Closed Mondays. Guided walks every Saturday at 10 a.m.



Erna Nixon Park

1200 Evans Road | Melbourne
(321) 952-4525 | BrevardParks.com/nature/index.php

A popular site for nature walks and outdoor festivals, the park features 2,300 feet of elevated boardwalk and 640 feet of trail winding through three different ecosystems. Open 9 a.m. to 5 p.m.

Florida Tech Botanical Gardens

150 W. University Boulevard | Melbourne
(321) 674-8125

Facilities.fit.edu/botanical_gardens.php

Thirty acres of lush subtropical growth and natural streams where several paved and earthen paths wind through the gardens, allowing visitors easy access to most areas within the gardens. Open dawn to dusk.

Great Florida Birding Trail

FloridaBirdingTrail.com

The Great Florida Birding Trail (GFBT) is a collection of 489 sites throughout Florida selected for their excellent bird-watching or bird-education opportunities. This 2,000-mile, self-guided highway trail is designed to conserve and enhance Florida's bird habitat by promoting bird-watching activities, conservation education and economic opportunity.

Haulover Canal and Mullethead Island

(321) 861-0667 | NBBD.com/godo/minwr

Get out on the water to really enjoy the birds and wildlife of Merritt Island. A low-profile kayak offers the opportunity to get close to wildlife and enjoy stunning scenery from a whole new perspective. The big attraction for birders in boats is a large spoil island that lies just west of the Haulover Canal.

Into the WILD

Helen and Allan Cruickshank Sanctuary

360 Barnes Boulevard | Rockledge
(Central Rockledge just west of US Highway 1)
(321) 255-4466 | EELBrevard.com/ep_recreation.php

Visitors hike the trail on the western portion of the sanctuary which winds through a pine flatwoods habitat where raptors may be circling overhead or perched in high pine trees.

Homer Powell Nature Center

2000 Wuesthoff Street | Titusville
(321) 264-5105 – North Area Parks Operation Office
BrevardParks.com/nature/wuesthoff.htm

Hike under towering trees along the .5-mile sandy nature trail to discover a natural Florida frontier forest with three distinct woodland habitats: wetlands, hardwood hammock and upland pine forest.

Indian River Lagoon Program

1-800-295-3264 | IRL.sjrvmd.com

Blend salty ocean water with freshwater from rivers and creeks and you get an estuary. The Indian River Lagoon – the most biologically diverse estuary in North America – straddles 156 miles of Florida's East Coast.

Jordan Scrub Sanctuary

Marie Street | Malabar
(321) 255-4466 | EELBrevard.com/ep_recreation.php

While hiking through the diverse habitats, bald eagles can be spotted fishing for meals in the lake and local scrub-jays can be seen foraging in the scrubby flatwoods.

Lori Wilson Park

1500 N. Atlantic Avenue | Cocoa Beach
(321) 455-1385

BrevardParks.com/nature/loriwilson.htm

A 3.155-foot nature boardwalk winds through a maritime hammock offering a glimpse of old Florida. The maritime forest is particularly popular to birders during October through March when migratory birds are present.

Maritime Hammock Sanctuary

6200 S. Highway A1A | Melbourne Beach
(321) 723-3556 | EELBrevard.com/ep_recreation.php

This sanctuary features a hiking trail with two bridges, a boardwalk over wetland areas and an observation deck over a marsh pond.

Merritt Island National Wildlife Refuge

(Located on the John F. Kennedy Space Center, east of Titusville)

(321) 861-0667

NBBD.com/godo/minwr, FWS.gov/merrittisland

One half of the refuge's 140,000 acres consists of brackish estuaries and marshes. The remaining lands consist of coastal dunes, scrub oaks, pine forests and flatwoods and palm and oak hammocks. The refuge is a gateway to the Great Florida Birding Trail. The refuge co-hosts the Space Coast Birding & Wildlife Festival each January. Portions are closed during shuttle launches. GFBT Site #East-62.

Micco Scrub Sanctuary

500 Micco Road | Micco
(321) 255-4466 | EELBrevard.com/ep_recreation.php

The Micco Scrub Sanctuary protects 1,322 acres of Brevard's remaining scrubby flatwoods and mesic flatwoods habitat.

Pelican Island National Wildlife Refuge

(772) 562-3909 | FWS.gov/pelicanisland

This five-acre mangrove island in the Indian River Lagoon where thousands of brown pelicans and other water birds roost and nest is America's first wildlife refuge. Established as the first federal bird reservation on March 14, 1903 by President Theodore Roosevelt, it was the forerunner to the national wildlife refuge system. GFBT Site #East-new.

Pine Island Conservation Area

(321) 255-4456 | EELBrevard.com/ep_recreation.php

This 1,000-acre conservation area provides access to two trails at the trailhead which is a half mile from the main entrance. Two canoe trails invite a relaxing way for visitors to observe area wildlife. GFBT Site #East-82.

Riverwalk Nature Center

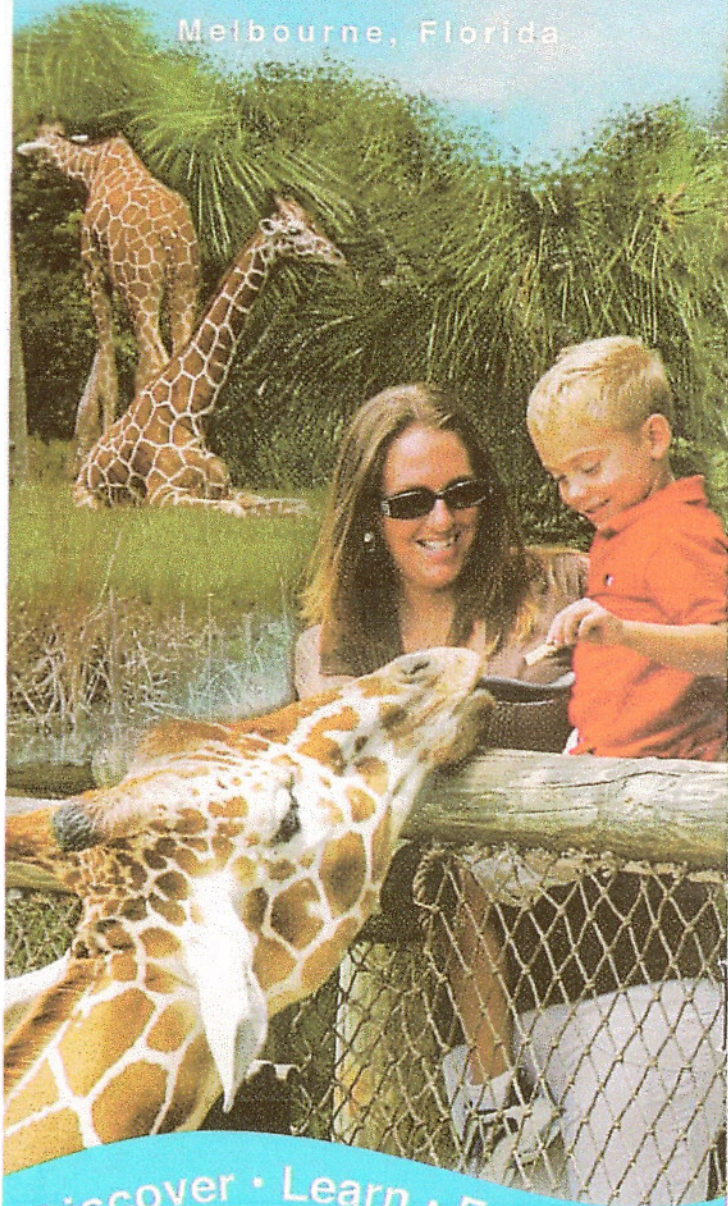
5355 US Highway 1 | Rockledge
(321) 433-4490

BrevardParks.com/parks/prkmn3.php#Riverwalk

Nestled along the Indian River, this park features a nature center, a pavilion with restrooms and a nature boardwalk that winds through a natural Florida hammock to the river.

BREVARD ZOO

Melbourne, Florida



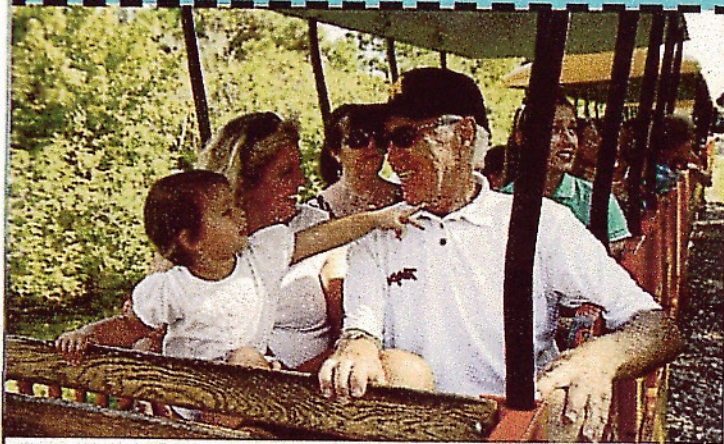
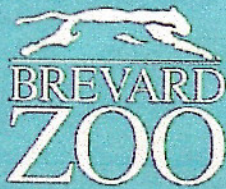
Discover • Learn • Experience

\$1.00 OFF

UP TO 4 GUESTS
WITH THIS COUPON

Not to be combined with other
offers, discounts, or during
special events.

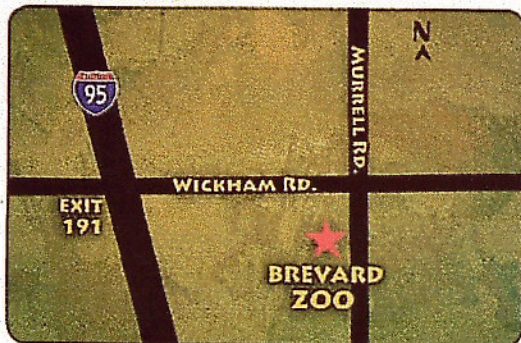
ZB2010



OPEN DAILY 9:30a.m.-5:00p.m.

LAST ADMISSION 4:15 p.m.

(Closed Thanksgiving & Christmas Day)



ACCREDITED BY THE
**ASSOCIATION
OF ZOOS &
AQUARIUMS**



Brevard Zoo is a 501(c)3 Non-Profit Organization

321.254.WILD • www.BrevardZoo.org

8225 N. Wickham Rd., Melbourne, FL 32940
1/2 mile east of I-95, exit 191